

TrustLayer One unifies web security, cloud app control, posture management, user authentication, security awareness training, and email security in a single cloud platform and portal. Multi-tenant, multi-tier administration lets a parent account manage child tenants centrally.

About TrustLayer One

TrustLayer One provides a single portal across core security services, simplifying operations for enterprises and MSPs alike. It brings the four layers – Mail, Browse, Users and Posture – together for central configuration, visibility and reporting.

It helps organisations move away from running separate point products in silos. Security teams configure policy once, monitor activity in one place and manage core defences in a way that reflects how people work today.

Users can access the applications and data they need from any device or location, while IT keeps the required visibility and control to protect everyone.

Note: Some technical materials may still refer to TrustLayer One by its former name Cloud USS.

The layers at a glance

- Mail: Email Security (incl. Microsoft 365 connector mode; optional Graph API actions) and Compliant Email Archive
- Browse: Web Security (agent or gateway, deep inspection, large category set) and CASB (inline and API modes with granular app/action control)
- Users: MFA (cloud, AD-integrated, multi-tenant) and SAT (automated training journeys with phishing simulations and analytics)
- Posture: CSPM + SSPM via API connectors with guided remediation and audit-ready reporting; parent-level multi-tenant scans via the USS connector

Branding and API

Partners can white label the portal by changing logos and interface colour for specific customers or business units. A REST API lets you embed elements of the TrustLayer One interface in other applications.

Visibility and reporting

A home dashboard provides charts and graphs for each service for instant visibility of key metrics and trends. Log data and scheduled reports are automatically archived for later retrieval.

Licensing and expansion

The platform is included with the purchase of any TrustLayer service, and additional services can be added at any time.

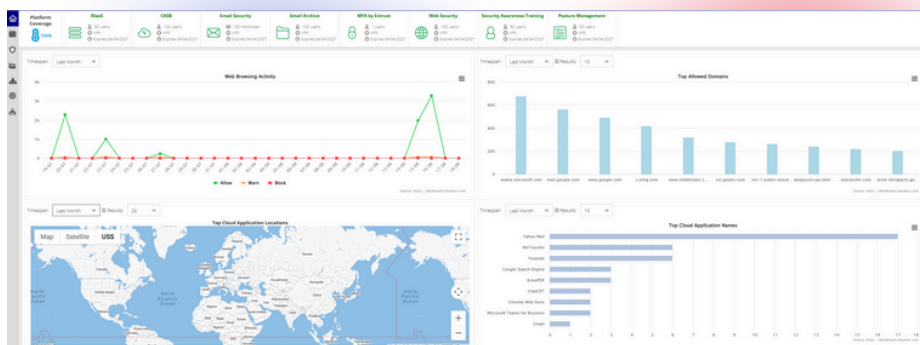
- > Fully integrates multiple core security services for simplified management with a single underlying shared identity store
- > 100% cloud-based with the ability to specify data residency by region (US, UK, Europe) per account
- > Multi-tenant and multi-tiered – ideally suited to organizations of any size as well as MSPs
- > Powerful Partner Tools include self-service account Provisioning, license management and billing reporting
- > Assume admin for ‘child accounts’ with one click to perform actions on behalf of business units or customers
- > Define unlimited administrator roles for flexible segregation of the admin function
- > Comprehensive audit trail of all administrator activity
- > Detailed reporting and analysis by an extensive list of drill-down criteria including time, user, device, URL category, cloud application class, high risk actions, keywords, policy name, email volume, spam, malware and more
- > Link reports to schedules to send via email as CSV or PDF attachment – also used for email alerts
- > Fully integrates with Microsoft® Active Directory (if required)

DATASHEET: TrustLayer One

Dashboard & reporting

TrustLayer One provides rich data visualization and reporting across all TrustLayer services and an extensive set of attributes and criteria.

Each administrator has their own Home Dashboard with charts and widgets specific to the services licensed. Multiple standard reports are included for each service within the Analytics section of the portal.



Detailed analysis and reporting is available by time, user, device (hostname and MAC address), URL category, web category, cloud application class, cloud app name, cloud app action, keyword (e.g. filename, comment, login details), policy name, risk level, email direction, delivery status (delivered, spam, virus), outcome (block or allow).

To optimize storage and reporting speeds logs are auto-archived based on individual service retention periods. As standard, these are 90 days for Email and Web Security and 1 year for Cloud App Security and MFA. Archives can be downloaded on-demand in CSV format.

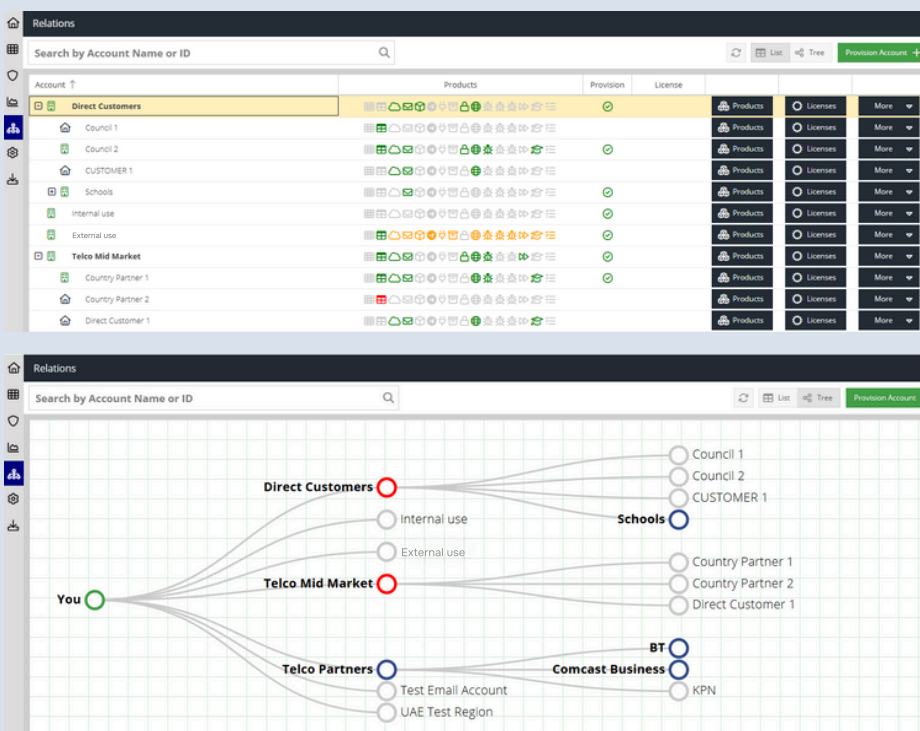
Whether audit data is required purely for visibility or for more formal attestation of compliance with internal policies or external standards, regulations and legislation, the Censornet Platform will provide the evidence needed.

Partner tools

Powerful Partner Tools within the TrustLayer One provides self-service tools for IT teams or MSPs to manage accounts.

Features include new account provisioning, service and license management, ability to suspend or delete an account, search, as well as reporting on service usage and license status.

Where there are multiple tiers within the account hierarchy there is also the option to select whether Partner Tools are visible within the account – so that a regional HQ can manage different in-country businesses, or a reseller can manage their end users.

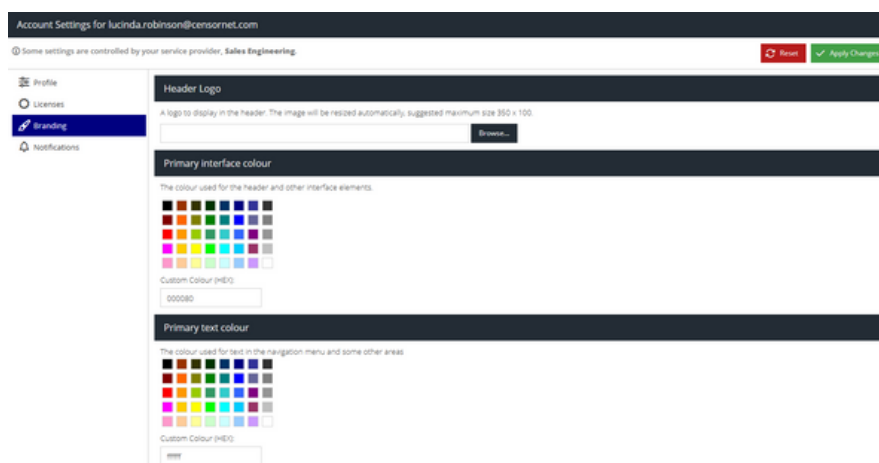


Multi-tenant and multi-tiered

TrustLayer One is 100% cloud-based and multi-tenant, delivered from data centers located in the US, UK and mainland Europe. To address data residency concerns, region is selected at the time of account provisioning.

Customer data is segregated using separate database schemas and multiple layers of encryption - each tenant has a unique key ensuring their data is isolated and all access to TrustLayer One is over HTTPS.

Branding allows MSPs to easily white label TrustLayer One and - using an extensive API - embed any element available in the portal within their own applications.



The ability to create 'child accounts' within the portal is a powerful feature that makes TrustLayer One ideal for large multi-national organisations or organisations with multiple brands, as well as perfectly suited to MSPs.

Branding that include logo and interface colour can be applied to each account for different business units, partners or customers. Each account has a separate set of policies for flexibility in meeting local legislative and regulatory compliance requirements, taking into account differences in data protection and privacy laws.

Ease of administration

TrustLayer One provides the flexibility to create unlimited admin roles based on over 100 access controls with the option to protect administrator accounts with two-factor authentication.

The admin function can be split to match organizational requirements, segregating account and agent provisioning, from viewing web usage reports, from maintaining URL categories or managing the Cloud Application Catalog.

Enterprises can delegate admin activities to local or regional teams whilst MSPs can reflect responsibilities within SLAs or use role based access control to enable value added services.

Different email addresses can be entered to receive notifications relating to system, maintenance, unblock and log archive notifications.

Parent accounts can assume the administrator role for a child account to manage settings, policies and rules across all services, or troubleshoot issues, on behalf of business units or customers.

Identity integrated

There is a single identity store within TrustLayer One that is shared across Email Security, Web Security, Cloud Application Security (CASB), Posture Management (CSPM), Security Awareness Training (SAT) and Multi-Factor Authentication (MFA).

For organizations with Microsoft® Active Directory there are options for Local Sync or Cloud Sync. Local Sync uses a locally installed AD Connector Service (agent) which pushes objects to the TrustLayer Cloud. Cloud sync uses a LDAP or LDAPS connection to pull objects. Local Sync has the additional benefit of not requiring any firewall rule changes. Both methods require a read only service account in AD.

For those organisations that do not have AD, local usernames will still be captured where possible.



TrustLayer One

Cybersecurity, the direct way.



Browse

CASB

Discover, analyze, secure & manage user interaction with cloud applications.

WEB

Stop web threats, filter distractions, and keep users focused and secure.



Users

SAT

Reduce human risk with engaging, automated security training.



Posture

POSTURE

Secure cloud and SaaS configs with real-time risk scoring and AI-powered fixes.



Mail

EMAIL

Seamless inbox protection from known, unknown and emerging threats.

ARCHIVING

Secure storage and quick retrieval for compliance and continuity.

TrustLayer One gives you mail, web, user and SaaS security that actually works together.

No patchwork, no platform fatigue.

Just what you need to protect your business and keep your stack under control.



Go direct

No proxies. No slowdowns. Just protection at full speed.



Get layered

Start with what you need, and scale as your business evolves.



Deploy fast

Live in minutes, not months, with prebuilt templates and zero fuss.



Stay quiet

Become invisible to users, but invaluable to your security team.

TRUSTLAYER LTD

4.2 Belvedere House, Basing View, Basingstoke,
Hampshire RG21 4HG

Phone: +44 (0) 845 230 9590

trustlayer.co.uk

TrustLayer